

PE anti-human CD25 Antibody

Catalog# / Size	356103 / 25 tests 356104 / 100 tests 356134 / 100 µg
Clone	M-A251
Regulatory Status	RUO
Workshop	IV A053
Other Names	IL-2 receptor α chain, Low affinity IL-2R, IL-2Rα chain
Isotype	Mouse IgG1, κ
Description	CD25 is a 55 kD type I transmembrane glycoprotein also known as low affinity IL-2 receptor α chain or Tac. It is expressed on progenitor lymphocytes, activated T and B cells, and activated monocytes/macrophages. CD25 is also expressed on a subset of non-stimulated CD4 ⁺ T cells termed T regulatory cells. Soluble CD25/IL-2Rα is produced as a consequence of lymphocyte stimulation and is found in biological fluids following inflammatory responses. CD25 associates with IL-2 receptor β (CD122) and common γ (CD132) chains to form a high affinity IL-2R complex.

Product Details

Verified Reactivity	Human
Reported Reactivity	Baboon, Cynomolgus, Rhesus
Antibody Type	Monoclonal
Host Species	Mouse
Immunogen	Human PHA-induced lymphocyte cells
Formulation	µg size: Phosphate-buffered solution, pH 7.2, containing 0.09% sodium azide. test sizes: Phosphate-buffered solution, pH 7.2, containing 0.09% sodium azide and BSA (origin USA).
Preparation	The antibody was purified by affinity chromatography and conjugated with PE under optimal conditions.
Concentration	µg sizes: 0.2 mg/mL test sizes: lot-specific (to obtain lot-specific concentration and expiration, please enter the lot number in our Certificate of Analysis online tool.)
Storage & Handling	The antibody solution should be stored undiluted between 2°C and 8°C, and protected from prolonged exposure to light. Do not freeze.
Application	FC - Quality tested
Recommended Usage	Each lot of this antibody is quality control tested by immunofluorescent staining with flow cytometric analysis . For flow cytometric staining using the µg size, the suggested use of this reagent is ≤0.4 µg per million cells in 100 µl volume. For flow cytometric staining using test sizes, the suggested use of this reagent is 5 µl per million cells in 100 µl staining volume or 5 µl per 100 µl of whole blood.
Excitation Laser	Blue Laser (488 nm) Green Laser (532 nm)/Yellow-Green Laser (561 nm)
Application Notes	Additional reported applications (for the relevant formats) include: immunohistochemical staining of paraformaldehyde fixed frozen sections ¹ and spatial biology (IBEX) ^{2,3} . The CD25 molecule reveals three epitope regions: A, B, and C. M-A251 antibody recognizes

epitope region B. Unlike other CD25 antibody clones, M-A251 can detect CD25 after fixation with paraformaldehyde.

Application References

(PubMed link indicates
BioLegend citation)

1. Li H and Pauza CD. 2015. *Eur. J. Immunol.* 45:298. (IHC)
2. Radtke AJ, *et al.* 2020. *Proc Natl Acad Sci USA.* 117:33455-33465. (SB) [PubMed](#)
3. Radtke AJ, *et al.* 2022. *Nat Protoc.* 17:378-401. (SB) [PubMed](#)

Product Citations

1. Chauvin C, *et al.* 2023. *iScience.* 26:106124. [PubMed](#)
2. Cignarella F *et al.* 2018. *Cell metabolism.* 27(6):1222-1235. [PubMed](#)
3. Parasar P, *et al.* 2022. *Am J Reprod Immunol.* 88:e13614. [PubMed](#)
4. Ke F, *et al.* 2023. *Elife.* 12:. [PubMed](#)
5. Deering RP, *et al.* 2023. *Sci Rep.* 13:8452. [PubMed](#)
6. Serra-Peinado C, *et al.* 2019. *Nat Commun.* 10:3705. [PubMed](#)
7. Schmitz T, *et al.* 2021. *J Reprod Immunol.* 148:103424. [PubMed](#)
8. Beatson RE, *et al.* 2021. *Cell Rep Med.* 2:100473. [PubMed](#)
9. Zhou Y, *et al.* 2017. *Front Cell Infect Microbiol.* 7:457. [PubMed](#)
10. Holbrook AK, *et al.* 2019. *Physiol Rep.* 7:e14234. [PubMed](#)
11. Maritz MF, *et al.* 2018. *PLoS One.* 13:e0196043. [PubMed](#)
12. Ackerley CG, *et al.* 2022. *Front Immunol.* 13:972170. [PubMed](#)

RRID

AB_2561860 (BioLegend Cat. No. 356103)
AB_2561861 (BioLegend Cat. No. 356104)
AB_2564145 (BioLegend Cat. No. 356134)

Antigen Details

Structure	Type I transmembrane glycoprotein, 55 kD; low-affinity IL-2 receptor α chain
Distribution	Activated T and B cells, monocytes/macrophages, Tregs
Interaction	Associates with IL-2R β /CD122 and IL-2R γ /CD132 receptor chains to form a high-affinity IL-2R complex
Ligand/Receptor	IL-2
Cell Type	B cells, Macrophages, Monocytes, T cells, Tregs
Biology Area	Cell Biology, Immunology, Neuroscience, Neuroscience Cell Markers
Molecular Family	CD Molecules, Cytokine/Chemokine Receptors
Antigen References	<ol style="list-style-type: none">1. Knapp W, <i>et al.</i> 1989. <i>Leucocyte Typing IV: White Cell Differentiation Antigens.</i> Oxford University Press.2. Schlossman S, <i>et al.</i> 1995. <i>Leucocyte Typing V: White Cell Differentiation Antigens.</i> Oxford University Press.3. Barclay N, <i>et al.</i> 1997. <i>The Leukocyte Antigen FactsBook.</i> Academic Press Inc.4. Taniguchi T and Minami Y. <i>et al.</i> 1993. <i>Cell</i> 73:5.5. Waldmann T. 1991. <i>J. Biol. Chem.</i> 266:2681.
Gene ID	3559

Related Protocols

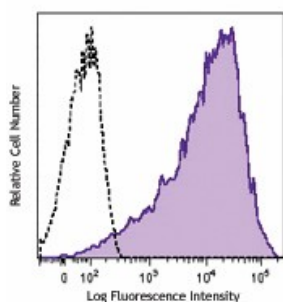
- [Cell Surface Flow Cytometry Staining Protocol](#)

Other Formats

APC/Cyanine7 anti-human CD25, Purified anti-human CD25, PE anti-human CD25, FITC anti-human CD25, PE/Cyanine7 anti-human CD25, APC anti-human CD25, PerCP/Cyanine5.5 anti-human CD25, Brilliant Violet 421™ anti-human CD25, Alexa Fluor® 488 anti-human CD25, Alexa Fluor® 700 anti-human CD25, Brilliant Violet 510™ anti-human CD25, PE/Dazzle™ 594 anti-human CD25, Biotin anti-human CD25, Alexa Fluor® 647 anti-human CD25, Pacific Blue™ anti-human CD25, PerCP anti-human CD25, APC/Fire™ 750 anti-human CD25, Brilliant Violet 711™ anti-human CD25, Brilliant Violet 785™ anti-human CD25, Brilliant Violet 605™ anti-human CD25, KIRAVIA Blue 520™ anti-human CD25, PE/Fire™ 700 anti-human CD25, APC/Fire™ 810 anti-human CD25, Spark NIR™ 685 anti-human CD25 Antibody, Spark YG™ 581 anti-human CD25, PE/Fire™ 640 anti-human CD25 Antibody, PE/Cyanine5 anti-human CD25, Spark Red™ 718 anti-human CD25, GMP PE anti-human CD25, GMP PE/Cyanine7 anti-human

CD25, PerCP/Fire™ 780 anti-human CD25, PE/Fire™ 744 anti-human CD25, PerCP/Fire™ 806 anti-human CD25, Brilliant Violet 650™ anti-human CD25, Brilliant Violet 750™ anti-human CD25

Product Data



PHA-stimulated (3 day) human peripheral blood lymphocytes were stained with CD25 (clone M-A251) PE (filled histogram) or mouse IgG1, κ PE isotype control (open histogram).

For Research Use Only. Not for diagnostic or therapeutic use.

This product is supplied subject to the terms and conditions, including the limited license, located at www.biolegend.com/terms ("Terms") and may be used only as provided in the Terms. Without limiting the foregoing, BioLegend products may not be used for any Commercial Purpose as defined in the Terms, resold in any form, used in manufacturing, or reverse engineered, sequenced, or otherwise studied or used to learn its design or composition without express written approval of BioLegend. Regardless of the information given in this document, user is solely responsible for determining any license requirements necessary for user's intended use and assumes all risk and liability arising from use of the product. BioLegend is not responsible for patent infringement or any other risks or liabilities whatsoever resulting from the use of its products.

BioLegend, the BioLegend logo, and all other trademarks are property of BioLegend, Inc. or their respective owners, and all rights are reserved.

8999 BioLegend Way, San Diego, CA 92121 www.biolegend.com
Toll-Free Phone: 1-877-Bio-Legend (246-5343) Phone: (858) 768-5800 Fax: (877) 455-9587