

APC anti-human CD326 (EpCAM) Antibody

Catalog# / Size	324207 / 25 tests 324208 / 100 tests
Clone	9C4
Regulatory Status	RUO
Other Names	Ep-CAM, tumor associated calcium signal transducer 1, epithelial cell surface antigen, epithelial glycoprotein 2, EGP2, adenocarcinoma associated antigen, TROP1
Isotype	Mouse IgG2b, κ
Description	CD326 is also known as Ep-CAM, tumor associated calcium signal transducer 1, epithelial cell surface antigen, epithelial glycoprotein 2, EGP2, adenocarcinoma associated antigen, and TROP1. CD326 is a type I transmembrane protein containing six disulfide bridges and one THYRO domain. This cell surface glycosylated 40 kD protein is highly expressed in bone marrow, colon, lung, and most normal epithelial cells and is expressed on carcinomas of gastrointestinal origin. Recently, it has been reported that CD326 expression occurs during the early steps of erythropoiesis. CD326 functions as a homotypic calcium-independent cell adhesion molecule and is believed to be involved in carcinogenesis by its ability to induce genes involved in cellular metabolism and proliferation. CD326 antigen is an immunotherapeutic target for the treatment of human carcinomas.

Product Details

Verified Reactivity	Human
Antibody Type	Monoclonal
Host Species	Mouse
Immunogen	DU.4475 breast carcinoma
Formulation	Phosphate-buffered solution, pH 7.2, containing 0.09% sodium azide and BSA (origin USA)
Preparation	The antibody was purified by affinity chromatography, and conjugated with APC under optimal conditions.
Concentration	Lot-specific (to obtain lot-specific concentration and expiration, please enter the lot number in our Certificate of Analysis online tool.)
Storage & Handling	The antibody solution should be stored undiluted between 2°C and 8°C, and protected from prolonged exposure to light. Do not freeze.
Application	FC - Quality tested
Recommended Usage	Each lot of this antibody is quality control tested by immunofluorescent staining with flow cytometric analysis . For flow cytometric staining, the suggested use of this reagent is 5 μ l per million cells in 100 μ l staining volume or 5 μ l per 100 μ l of whole blood.
Excitation Laser	Red Laser (633 nm)
Application Notes	Additional reported applications (for the relevant formats) include: immunofluorescence, immunohistochemistry ³ , and spatial biology (IBEX) ^{4,5} .
Application References	<ol style="list-style-type: none"> Lammers R, <i>et al.</i> 2002. <i>Exp. Hematol.</i> 30:537. Schultz LD, <i>et al.</i> 2010. <i>P. Natl. Acad. Sci. USA</i> 107:13022. PubMed Human Protein Atlas http://www.proteinatlas.org/ENSG00000119888/antibody (IHC) Radtke AJ, <i>et al.</i> 2020. <i>Proc Natl Acad Sci USA.</i> 117:33455-33465. (SB) PubMed Radtke AJ, <i>et al.</i> 2022. <i>Nat Protoc.</i> 17:378-401. (SB) PubMed
(PubMed link indicates BioLegend citation)	

Product Citations

1. Wang Y, *et al.* 2022. *Cancer Res.* 82:3903. [PubMed](#)
2. Cabello P, *et al.* 2023. *Cancers (Basel)*. 15:. [PubMed](#)
3. Beckinger S, *et al.* 2023. *Front Oncol.* 13:1160824. [PubMed](#)
4. Golubovskaya V, *et al.* 2023. *Cancers (Basel)*. 15:. [PubMed](#)
5. Maughan EF, *et al.* 2022. *iScience.* 25:105409. [PubMed](#)
6. Kadur Lakshminarasimha Murthy P, *et al.* 2022. *Dev Cell.* 57:310. [PubMed](#)
7. Mulay A, *et al.* 2021. *Cell Reports.* 35(5):109055. [PubMed](#)
8. Tang C, *et al.* 2020. *Stem Cell Research.* 39:101511.. [PubMed](#)
9. Yamaguchi N, *et al.* 2020. *eLife.* 8:e52135.. [PubMed](#)
10. Yu XX, *et al.* 2021. *Cell Res.* 31:886. [PubMed](#)
11. Segal JM, *et al.* 2019. *Nat Commun.* 10:3350. [PubMed](#)
12. Gao Q, *et al.* 2019. *J Exp Med.* 216:688. [PubMed](#)

RRID

AB_756081 (BioLegend Cat. No. 324207)
AB_756082 (BioLegend Cat. No. 324208)

Antigen Details

Structure	Type I transmembrane protein, contains six disulfide bridges, one THYRO domain, approximate molecular weight 40 kD.
Distribution	Highly expressed in bone marrow, colon, lung, and most normal epithelial cells. Also highly expressed on carcinomas of gastrointestinal origin. Expressed during early erythropoiesis.
Function	Homotypic calcium-independent cell adhesion. CD326 is believed to be involved in carcinogenesis by its ability to induce genes involved in cellular metabolism and proliferation.
Modification	Glycosylated.
Cell Type	Embryonic Stem Cells, Epithelial cells
Biology Area	Cell Biology, Immunology, Stem Cells
Molecular Family	Adhesion Molecules, CD Molecules
Antigen References	1. Strnad J, <i>et al.</i> 1989. <i>Cancer Res.</i> 49:314. 2. Munz M, <i>et al.</i> 2004. <i>Oncogene</i> 23:5748. 3. Rao CG, <i>et al.</i> 2005. <i>Int. J. Oncol.</i> 27:49.
Gene ID	4072

Related Protocols

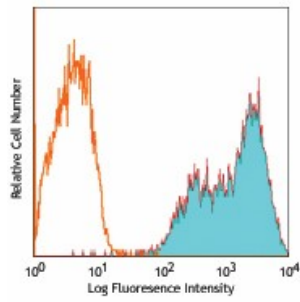
- [Cell Surface Flow Cytometry Staining Protocol](#)

Other Formats

Pacific Blue™ anti-human CD326 (EpCAM), Brilliant Violet 421™ anti-human CD326 (EpCAM), Brilliant Violet 605™ anti-human CD326 (EpCAM), PE/Cyanine7 anti-human CD326 (EpCAM), Brilliant Violet 650™ anti-human CD326 (EpCAM), Alexa Fluor® 594 anti-human CD326 (EpCAM), APC/Fire™ 750 anti-human CD326 (EpCAM), PE/Dazzle™ 594 anti-human CD326 (EpCAM), Brilliant Violet 510™ anti-human CD326 (EpCAM), Brilliant Violet 785™ anti-human CD326 (EpCAM), Purified anti-human CD326 (EpCAM) (Maxpar® Ready), PE/Cyanine5 anti-human CD326 (EpCAM), Spark UV™ 387 anti-human CD326 (EpCAM), Spark Red™ 718 anti-human CD326 (EpCAM) (Flexi-Fluor™), TotalSeq™-A0123 anti-human CD326 (EpCAM), Alexa Fluor® 700 anti-human CD326 (EpCAM), TotalSeq™-D0123 anti-human CD326 (EpCAM), Brilliant Violet 711™ anti-human CD326 (EpCAM), TotalSeq™-C0123 anti-human CD326 (EpCAM), Spark PLUS UV395™ anti-human CD326 (EpCAM), PE anti-human CD326, Brilliant Violet 570™ anti-human CD326 (EpCAM), Brilliant Violet 750™ anti-human CD326 (EpCAM), PerCP/Cyanine5.5 anti-human CD326 (EpCAM), TotalSeq™-B0123 anti-human CD326 (EpCAM), APC/Cyanine7 anti-human CD326 (EpCAM), Alexa Fluor® 647 anti-human CD326 (EpCAM), Biotin anti-human CD326 (EpCAM), Spark Blue™ 574 anti-human CD326 (EpCAM) (Flexi-Fluor™), Spark Blue™ 550 anti-human CD326 (EpCAM) (Flexi-Fluor™), Purified anti-human CD326 (EpCAM), FITC anti-human CD326 (EpCAM), PE anti-human CD326 (EpCAM), APC anti-human CD326 (EpCAM), Alexa Fluor® 488 anti-human CD326 (EpCAM)

Product Data

Human colon carcinoma cell line HT29
stained with 9C4 APC



For Research Use Only. Not for diagnostic or therapeutic use.

This product is supplied subject to the terms and conditions, including the limited license, located at www.biolegend.com/terms ("Terms") and may be used only as provided in the Terms. Without limiting the foregoing, BioLegend products may not be used for any Commercial Purpose as defined in the Terms, resold in any form, used in manufacturing, or reverse engineered, sequenced, or otherwise studied or used to learn its design or composition without express written approval of BioLegend. Regardless of the information given in this document, user is solely responsible for determining any license requirements necessary for user's intended use and assumes all risk and liability arising from use of the product. BioLegend is not responsible for patent infringement or any other risks or liabilities whatsoever resulting from the use of its products.

BioLegend, the BioLegend logo, and all other trademarks are property of BioLegend, Inc. or their respective owners, and all rights are reserved.

8999 BioLegend Way, San Diego, CA 92121 www.biolegend.com
Toll-Free Phone: 1-877-Bio-Legend (246-5343) Phone: (858) 768-5800 Fax: (877) 455-9587