

APC anti-human CD25 Antibody

| | |
|--------------------------|--|
| Catalog# / Size | 302609 / 25 tests 302610 / 100 tests |
| Clone | BC96 |
| Regulatory Status | RUO |
| Workshop | V T-072 |
| Other Names | Low affinity IL-2R, IL-2R α chain, Tac, p55 |
| Isotype | Mouse IgG1, κ |
| Description | CD25 is a 55 kD type I transmembrane glycoprotein also known as the low affinity IL-2 receptor α chain or Tac. It is expressed on progenitor lymphocytes, activated T and B cells, and activated monocytes/macrophages. CD25 is also expressed on a subset of non-stimulated CD4 ⁺ T cells termed T regulatory cells. CD25 associates with the IL-2 receptor β (CD122) and common γ chains (CD132) to form the high affinity IL-2R complex. |

Product Details

| | |
|---|--|
| Verified Reactivity | Human |
| Reported Reactivity | Baboon, Chimpanzee, Cynomolgus, Pigtailed Macaque, Rhesus |
| Antibody Type | Monoclonal |
| Host Species | Mouse |
| Formulation | Phosphate-buffered solution, pH 7.2, containing 0.09% sodium azide and BSA (origin USA) |
| Preparation | The antibody was purified by affinity chromatography, and conjugated with APC under optimal conditions. |
| Concentration | Lot-specific (to obtain lot-specific concentration and expiration, please enter the lot number in our Certificate of Analysis online tool.) |
| Storage & Handling | The antibody solution should be stored undiluted between 2°C and 8°C, and protected from prolonged exposure to light. Do not freeze. |
| Application | FC - Quality tested |
| Recommended Usage | Each lot of this antibody is quality control tested by immunofluorescent staining with flow cytometric analysis . For flow cytometric staining, the suggested use of this reagent is 5 μ l per million cells in 100 μ l staining volume or 5 μ l per 100 μ l of whole blood. |
| Excitation Laser | Red Laser (633 nm) |
| Application Notes | Additional reported applications include: immunocytochemistry ³ . |
| Application References | 1. Schlossman S, <i>et al.</i> Eds. 1995. Leucocyte Typing V. Oxford University Press. New York. 2. Kmiecik M, <i>et al.</i> 2009. <i>J. Transl. Med.</i> 7:89. (FC) PubMed 3. Ernst CW, <i>et al.</i> 2007. <i>Clin. Exp. Immunol.</i> 148:271. (ICC) PubMed |
| (PubMed link indicates BioLegend citation) | |

Product Citations

1. Siepe DH, *et al.* 2022. *Elife*. 11:. [PubMed](#)
2. Shang P, *et al.* 2022. *Acta Biochim Biophys Sin (Shanghai)*. 54:1497. [PubMed](#)
3. Wu X, *et al.* 2023. *iScience*. 26:106559. [PubMed](#)
4. Beckinger S, *et al.* 2023. *Front Oncol*. 13:1160824. [PubMed](#)
5. Koutsakos M, *et al.* 2022. *Immunity*. 55:1316. [PubMed](#)
6. Martínez-Sabadell A, *et al.* 2022. *Cell Rep*. 41:111430. [PubMed](#)
7. Sharma AL, *et al.* 2022. *iScience*. 25:105651. [PubMed](#)
8. Ezeonwumelu IJ, *et al.* 2022. *Int J Mol Sci*. 23: . [PubMed](#)
9. Wang P, *et al.* 2023. *Front Immunol*. 13:1104329. [PubMed](#)
10. Zhang B, *et al.* 2023. *Signal Transduct Target Ther*. 8:28. [PubMed](#)
11. Cao B, *et al.* 2022. *Nat Commun*. 13:6203. [PubMed](#)
12. Otano I, *et al.* 2021. *Nat Commun*. 12:7296. [PubMed](#)

RRID

AB_314279 (BioLegend Cat. No. 302609)
AB_314280 (BioLegend Cat. No. 302610)

Antigen Details

| | |
|---------------------------|---|
| Structure | Type I transmembrane glycoprotein, 55 kD |
| Distribution | Activated T cells and B cells, monocytes/macrophages, Treg |
| Function | Associates with IL-2 receptor β (CD122) and γ chains (CD132) to form high affinity IL-2R complex |
| Ligand/Receptor | IL-2 |
| Cell Type | B cells, Macrophages, Monocytes, T cells, Tregs |
| Biology Area | Cell Biology, Immunology, Neuroscience, Neuroscience Cell Markers |
| Molecular Family | CD Molecules, Cytokine/Chemokine Receptors |
| Antigen References | 1. Taniguchi T, <i>et al.</i> 1993. <i>Cell</i> 73:5. 2. Waldmann T. 1991. <i>J. Biol. Chem.</i> 266:2681. |
| Gene ID | 3559 |

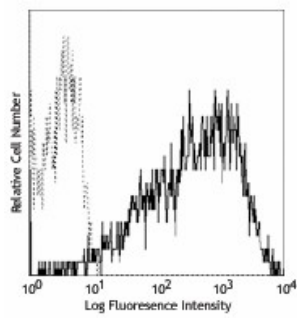
Related Protocols

- [Cell Surface Flow Cytometry Staining Protocol](#)

Other Formats

Brilliant Violet 421™ anti-human CD25, Brilliant Violet 711™ anti-human CD25, Brilliant Violet 650™ anti-human CD25, Brilliant Violet 605™ anti-human CD25, Brilliant Violet 785™ anti-human CD25, Brilliant Violet 510™ anti-human CD25, APC/Fire™ 750 anti-human CD25, TotalSeq™-D0085 anti-human CD25, TotalSeq™-B0085 anti-human CD25, PE/Dazzle™ 594 anti-human CD25, TotalSeq™-C0085 anti-human CD25, PE/Cyanine7 anti-human CD25, Spark YG™ 593 anti-human CD25 (Flexi-Fluor™) Antibody, Alexa Fluor® 647 anti-human CD25, Pacific Blue™ anti-human CD25, Alexa Fluor® 700 anti-human CD25, APC/Fire™ 810 anti-human CD25 Antibody, Biotin anti-human CD25, PerCP/Cyanine5.5 anti-human CD25, PerCP anti-human CD25, APC anti-human CD25, FITC anti-human CD25, PE anti-human CD25, PE/Cyanine5 anti-human CD25, Purified anti-human CD25, APC/Cyanine7 anti-human CD25, Brilliant Violet 570™ anti-human CD25, TotalSeq™-A0085 anti-human CD25, Spark PLUS B488™ anti-human CD25, Alexa Fluor® 488 anti-human CD25, PE/Fire™ 640 anti-human CD25

Product Data



PHA-stimulated (3 day) human peripheral blood lymphocytes were stained with CD25 (clone BC96) APC (filled histogram) or mouse IgG1, κ APC isotype control (open histogram).

For Research Use Only. Not for diagnostic or therapeutic use.

This product is supplied subject to the terms and conditions, including the limited license, located at www.biolegend.com/terms ("Terms") and may be used only as provided in the Terms. Without limiting the foregoing, BioLegend products may not be used for any Commercial Purpose as defined in the Terms, resold in any form, used in manufacturing, or reverse engineered, sequenced, or otherwise studied or used to learn its design or composition without express written approval of BioLegend. Regardless of the information given in this document, user is solely responsible for determining any license requirements necessary for user's intended use and assumes all risk and liability arising from use of the product. BioLegend is not responsible for patent infringement or any other risks or liabilities whatsoever resulting from the use of its products.

BioLegend, the BioLegend logo, and all other trademarks are property of BioLegend, Inc. or their respective owners, and all rights are reserved.

8999 BioLegend Way, San Diego, CA 92121 www.biolegend.com
Toll-Free Phone: 1-877-Bio-Legend (246-5343) Phone: (858) 768-5800 Fax: (877) 455-9587